

Loop Road Travel Flow and Parking

It is requested that all freshmen use the Loop Road for pick-up and drop-off. Juniors and seniors may use the Loop Road to be dropped off/picked up as well.

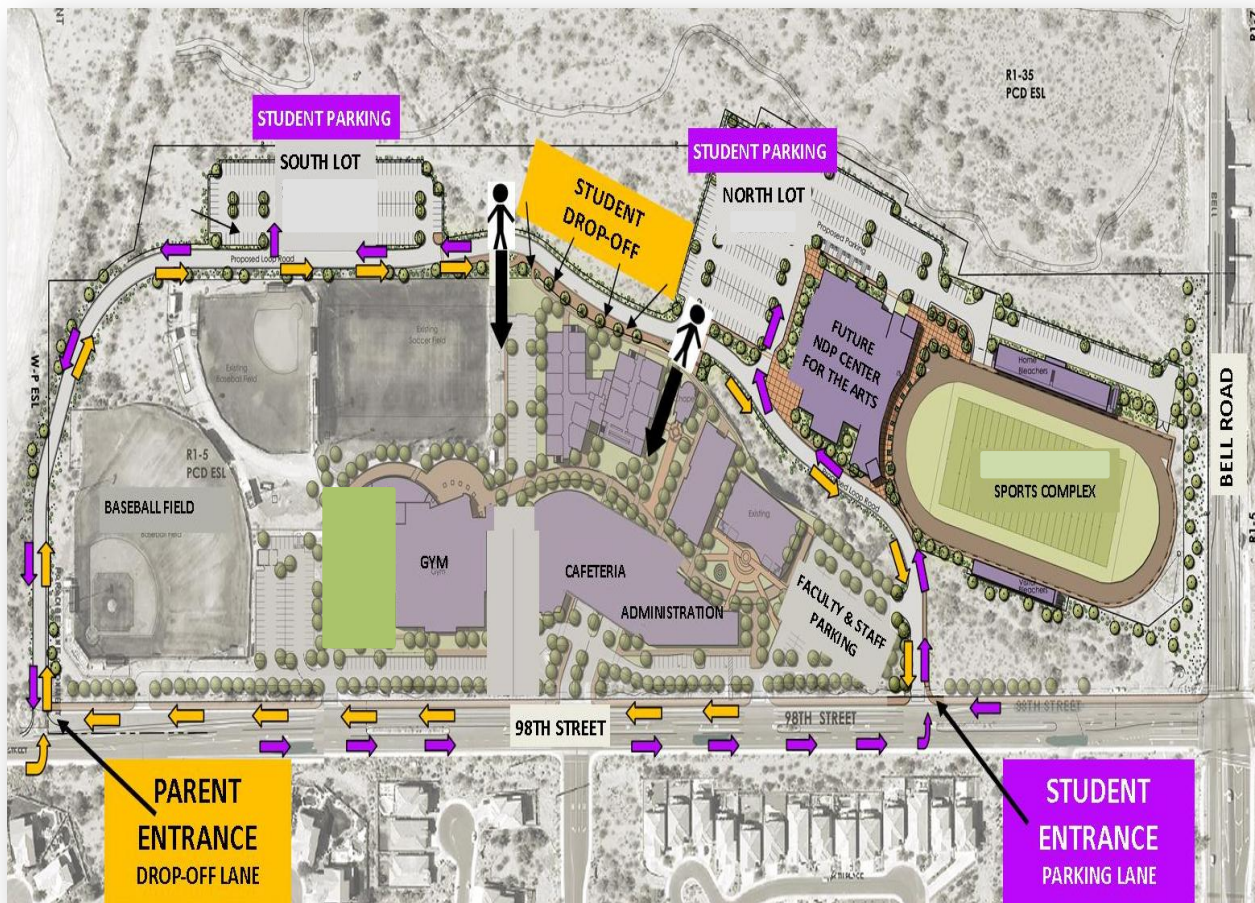
Morning Drop-off

Car flow travels two ways in the morning. Parents dropping off students should continue to enter through the south entrance. When dropping off students, please pull as far forward as possible. However, once you have pulled all the way forward and traffic has stopped next to the sidewalk, please have your student disembark. This should allow us to empty about 20 cars at a time and move the next set of vehicles through. When you exit, please turn right onto 98th Street to expedite the flow of traffic.

Student Drivers Parking on Campus

All students who will be parking on campus must have a parking pass and may park in either lot on a first-come, first-serve basis. Only students with car pool parking passes may park in a designated car pool spot. Car pool spots are not guaranteed. **ALL STUDENT DRIVERS MUST ENTER CAMPUS AT THE NORTH ENTRANCE.**

Morning Drop-Off Travel Flow Map



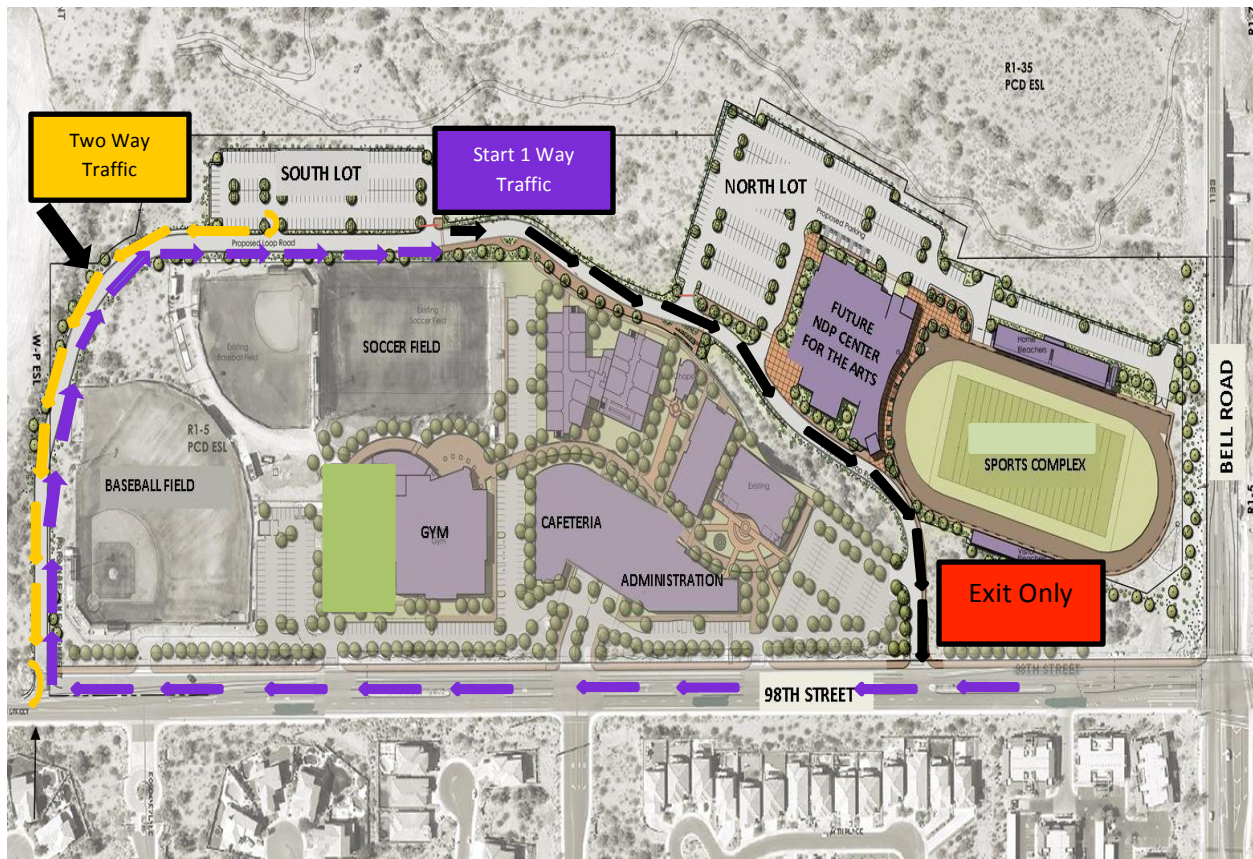
Afternoon Pick-up

All afternoon pick-up traffic must enter through the south entrance and all students should be picked up from the sidewalk area. Please pull as far forward as possible to pick up your student. Once you have picked up your student from the sidewalk area, you may exit in the left lane as traffic flows one way from the sidewalk area to the north exit. Be aware that the north student lot also exits to this direction, so there may be some merging traffic as you exit. Also, it would be appreciated if you could remind your student to visit their locker quickly and proceed to the sidewalk as fast as possible. In the end, traffic can only move as fast as the students.

Student Drivers Parked On Campus

Depending on the lot you park in, you must exit campus a specific direction. Those students who park in the North Lot will exit to the left (north) into one-way traffic. Please be cognizant of the fact you are merging into traffic from the student pick-up area. Students who park in the South Lot must exit to the right (south) where traffic flows two ways.

Afternoon Pick-Up Traffic Flow Map



Jensen Gymnasium South Lot Drop-off and Pick-up

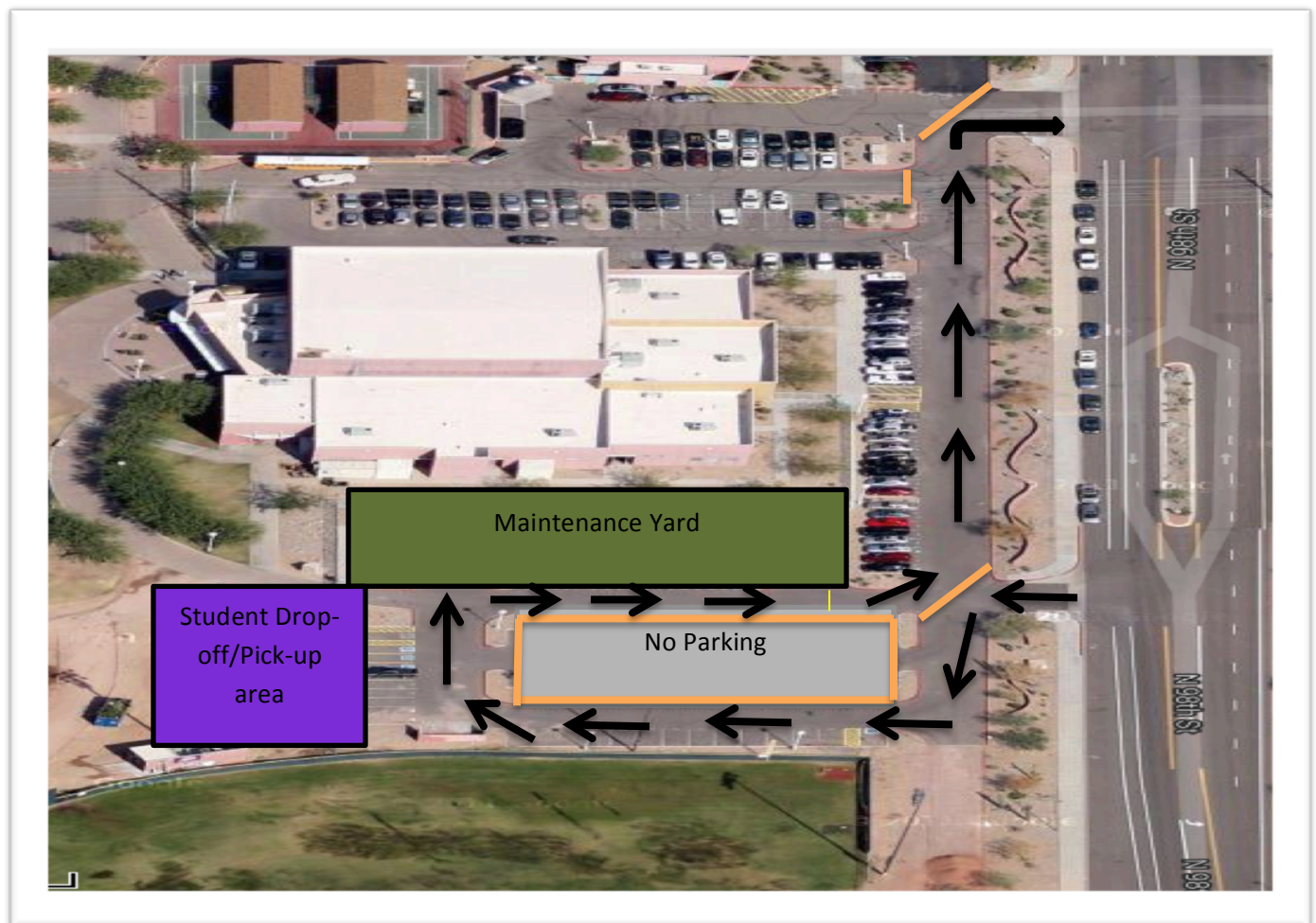
It is requested that all SOPHOMORES use the Jensen Gymnasium South Lot for drop-off and pick-up. Seniors and juniors may use this lot for getting dropped off/picked up as well.

Drop-off

When dropping students off in the Jensen Gymnasium South Lot, please pull forward to the designated drop-off area and allow your student to exit. Please keep in mind that traffic flows one way at both morning drop-off and afternoon pick-up times. Vehicles exiting this lot should turn right onto 98th Street to expedite traffic flow.

Pick-up

When picking up your student in the Jensen Gymnasium South Lot, we ask that parents who arrive before the end of the school day pull forward and keep left all the way up to the yellow strip painted on the lane closest to the gymnasium. Once your student has loaded into the vehicle, you may exit on the right side of the lane. Please keep in mind that traffic moves one way in this lot at both morning drop-off and afternoon pick-up times. Vehicles exiting this lot should turn right onto 98th Street to expedite traffic flow.



Reminders:

- 98th Street is labeled “No Parking” and is a two-lane road. You can be ticketed for parking and dropping students off on 98th Street.
- These parking rules also apply to Paradise Lane directly across from the entrance of school.
- Students should only be picked up from the sidewalk area. Dropping students off in any other area creates an unsafe environment for all as they must cross moving traffic to get on campus.